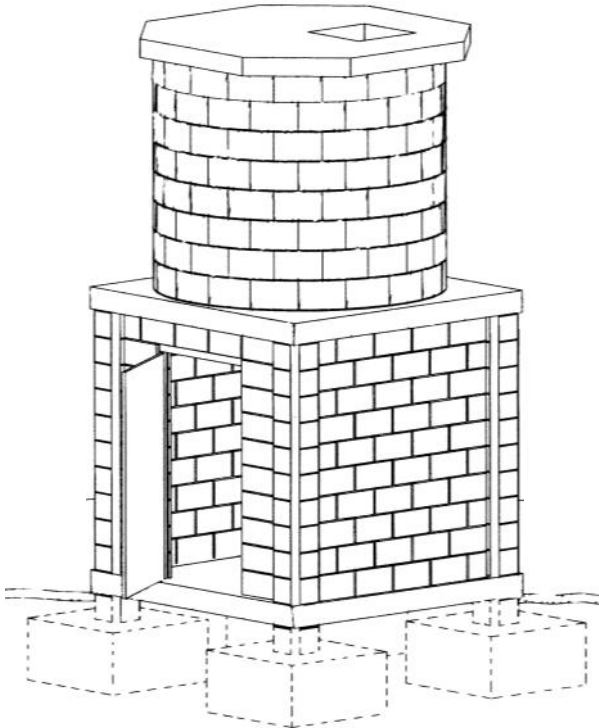


MULTIVIBE & HAND POWERED BUILDING MATERIALS PRODUCTS

STORAGE UNIT SU PLANT

3 LEVEL SECURE STORAGE OF WATER AND PRODUCE.



The 'A' unit illustrated above will contain 3000 litres of water and provide 40 cubic metres of internal storage.

A team of 3 workers will be able to produce all of the elements needed for one Storage Unit in one working week.

Option plan sizes for Storage Units to this design are:

- A) 2.4m x 2.4m with 2m diameter tank
- B) 3.6m x 3.6m with 3m diameter tank
- C) 4.8m x 4.8m with 4m diameter tank

A typical plant consists of:

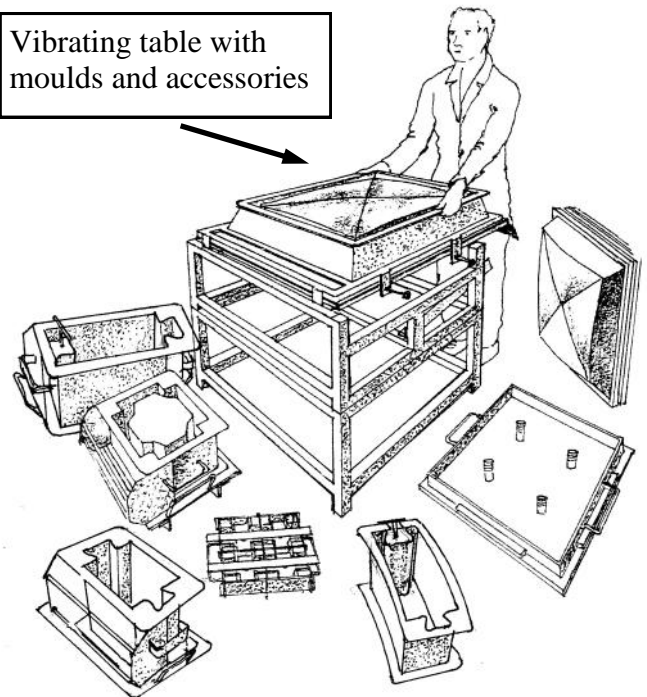
- 1) Multivibe vibrators with vibrating table
- 2) Small accessory pack and
- 3) 20-30 Waffle setting molds
- 4) 4-5 Column top slab setting forms
- 5) 1 Steel mould for column blocks
- 6) 1 Steel mould for concrete brackets

The Parry Storage Unit is derived from the existing open top Water Tank produced by the BLPW plant. The addition of rigid, impermeable cover improves the quality of the Water Tank by preventing the growth of algae in the water and contamination by wind-blown debris and animals.

The tank can be used for rainwater storage by connecting it to roof gutters or by using conventional pumps. All necessary plumbing can be installed during construction, including taps for removing water and for emptying the tank. The central hatch in the tank roof provides easy access for cleaning and maintenance.

The Storage room underneath is intended for material such as grain, rice and other foodstuffs. All three slabs at ground level, supporting the water tank and providing the cap to the tank are built using Parry's material-saving waffle precast formwork units.

Vibrating table with
moulds and accessories



STORAGE UNIT SU1 - 2/3/4metre DIA

Capacity: To produce 1 storage tank of 2m, 3m, or 4m diameter per week

EQUIPMENT DESCRIPTION	Unit Cost	Quantity	COST
A Curved block mould - 2m, 3m or 4m	£220.00	1	£220.00
B Large format vibrating table - Electric or Hand Powered	£1,007.00	1	£1,007.00
C Set of attachments for forming 600mm square 'waffles'	£495.00	1	£450.00
D Steel braced PVC 'waffle' setting moulds	£30.00	22	£660.00
E 3-Piece steel mould for column blocks	£385.00	1	£385.00
F Steel skirt for forming 600mm square column top slabs	£38.50	1	£38.50
G Setting forms for column top slabs	£22.00	4	£88.00
H 2-Piece steel mould for prop-support pads (4-imp)	£66.00	1	£66.00
I Accessory Pack: 2 floats, 2 trowels, mortar measuring scoop, mortar template & manual	£115.50	1	£115.50
J Block accessory pack: float, trowel & manual	£132.00	1	£132.00
K Packing	£240.00	1	£240.00
Total Cost Ex-Works (UK Pounds Sterling)			£3,447.00
Documentation and Inland Freight to shipper			£100.00
Total Cost FOB UK Port			£3,547.00